



ADDENDUM #1
DSA # 01-119706
DSA File #- 21-39

January 21, 2022

Project: Venetia Valley School Field Restoration Project
177 N San Pedro Road
San Rafael, CA 94903

Owner: San Rafael City Schools
320 Nova Albion Way,
San Rafael, CA 94903

Architect: SVA Architects
2335 Broadway, Suite 301
Oakland, Ca 94612

Construction Manager: Cumming
505 14th Street, Suite 900
Oakland, CA 94612

Note: The following revisions and clarifications to the Bid Documents (plans and specifications) shall become a part of the Contract Documents prior to Bid. The narrative descriptions listed for the changes are provided for general reference as to the revisions, and each revised drawing/specification included shall be reviewed for the full extent of revisions.

1. CIVIL

A. Sheet C3.0

- i. Replace sheet C3.0 with the attached Addendum 1 sheet C3.0.

Description of changes:

- Keynote 10 was added denoting the rough location of the transition between new 6" curb and new retaining wall.

B. Sheet C3.1

- i. Replace sheet C3.1 with the attached Addendum 1 sheet C3.1.

Description of changes:

- Minor changes to the pavement legend.
- Thickness of AC pavement and aggregate base adjusted to match recommendation of Geotech report.
- Material of track changed to AC pavement.

Venetia Valley School Field Restoration

Addendum 1

January 21, 2022

Page 2 of 2



C. Sheet C6.0

- i. Replace sheet C6.0 with the attached Addendum 1 sheet C6.0.

Description of changes:

- Revisions to details 4 and 9.

2. Pre-Bid Questions and Responses

- A. Question 1: Can you provide the desired on-site construction dates for the Venetia Valley School Field Restoration Project?
Response: The project is to be completed by June 19, 2022.
- B. Question 2: How do you pre-qualify?
Response: a. Pre-qualification is completed through Quality Bidders. Follow the link: <https://www.srcsbondprogram.org/cms/lib/CA01800031/Centricity/Domain/16/Contractor%20Prequalification%20Process%20Letter.pdf>
- C. Question 3: Please clarify Section 0 11 16 Item 11.
Response: The contractor is not required to purchase old materials.
- D. Question 4: What are the school hours?
Response: The school hours are available at https://vv-srcs-ca.schoolloop.com/pf4/cms2/view_page?d=x&group_id=1569050662377&vdid=id38mfo2axnq17z. Currently, the school hours are Monday, Tuesday, Thursday, Friday 8:30 am to 3:35 pm and Wednesday 8:30 am to 2:05 pm.
- E. Question 5: What are the parameters for deliveries on site?
Response: Refer to document 01 35 13.23 Site Standards.
- F. Question 6: Where can we get a copy of the bid form and the bid bond?
Response: The Bid Form is in document 00 41 13 and the Bid Bond is in document 00 43 13.

Attachments:

Sheet C3.0

Sheet C3.1

Sheet C6.0

Distribution:

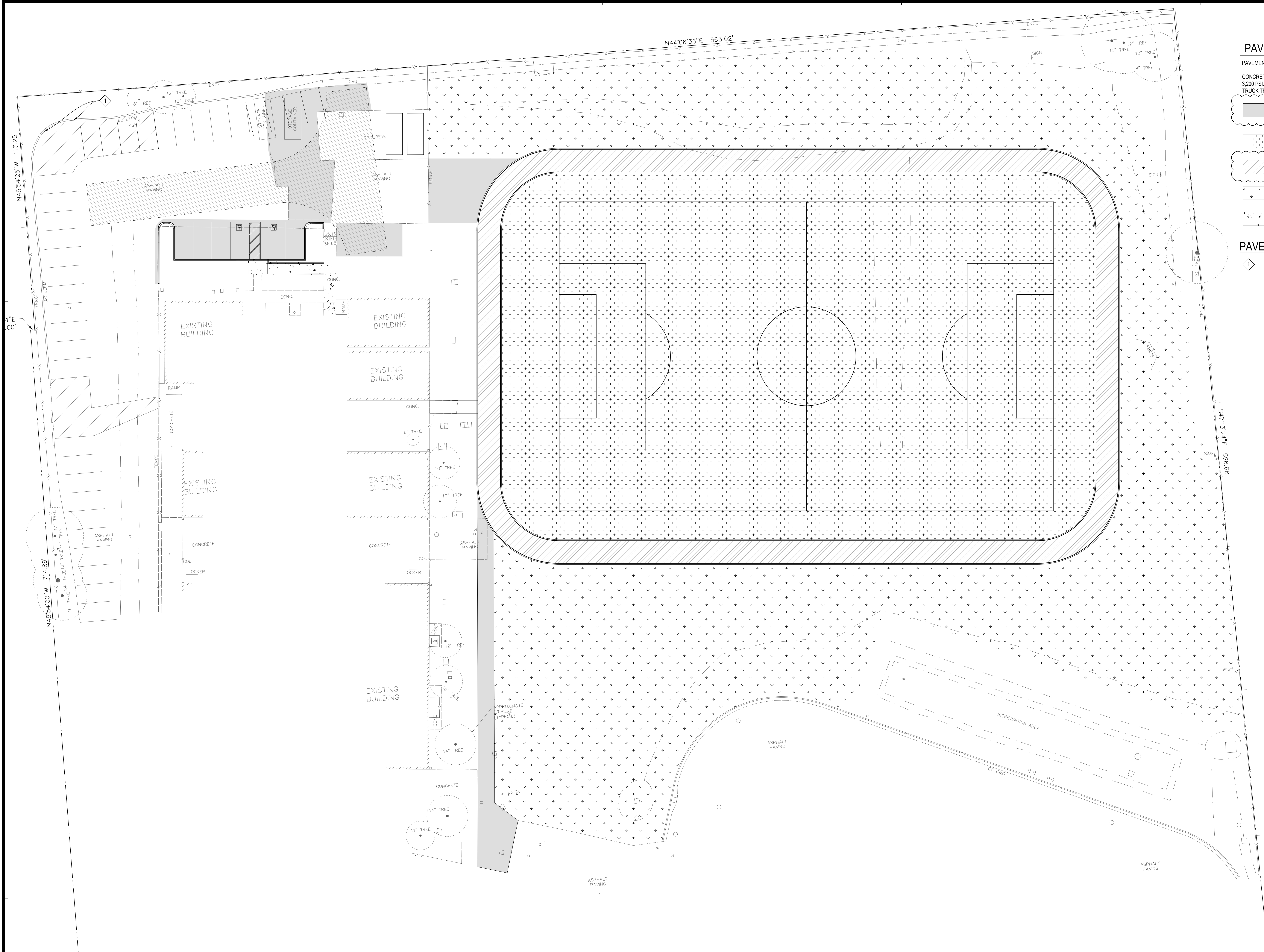
Bidders

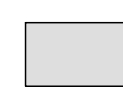
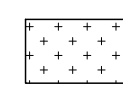

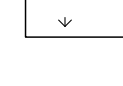
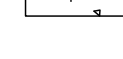
Owner


Construction Manager

END OF ADDENDUM #1

CB



- PAVEMENT LEGEND**
- PAVEMENT SECTION TO BE APPROVED BY GEOTECHNICAL ENGINEER.
- CONCRETE PAVEMENT SURFACES TO HAVE 28-DAY COMPRESSIVE STRENGTH OF AT LEAST 3,200 PSI. CONCRETE PAVING IN VEHICULAR TRAVEL AREA TO MEET ADTT (AVERAGE DAILY TRUCK TRAFFIC) OF 1.
-  AC PAVEMENT 3.5" AC PAVEMENT OVER 11" CLASS 2 BASEROCK COMPACTED TO 98% R.C. OVER 90% R.C. COMPACTED NATIVE SOILS
 -  NEW FIELD NEW TURF AREA. SEE LANDSCAPE ARCHITECT PLANS FOR SPECIFICATIONS.
 -  TRACK 2.5" AC PAVEMENT OVER 6.5" CLASS 2 BASEROCK COMPACTED TO 98% R.C. OVER 90% R.C. COMPACTED NATIVE SOILS
 -  LANDSCAPE AREA SEE LANDSCAPE PLANS
 -  SIDEWALK CONCRETE 5" CONCRETE W/ #4 @ 12" O.C. E.W. OVER 5" CLASS 2 BASEROCK COMPACTED TO 98% R.C. OVER NATIVE SOILS COMPACTED TO 90% R.C.

- PAVEMENT KEYNOTES**
-  CONTRACTOR TO FIX LOW SPOT IN AC PAVEMENT AREA

OWNER: SAN RAFAEL CITY SCHOOLS

PROJECT NAME: VENETIA VALLEY SCHOOL FIELD

CLIENT ADDRESS: 177 N SAN PEDRO RD, SAN RAFAEL, CA 94903

SEAL:



REVISIONS:

NO.	DESCRIPTION	DATE
▲	ADDENDUM 1	12/23/2021
▲		
▲		
▲		
▲		
▲		
▲		
▲		
▲		
▲		

DATE ISSUED:

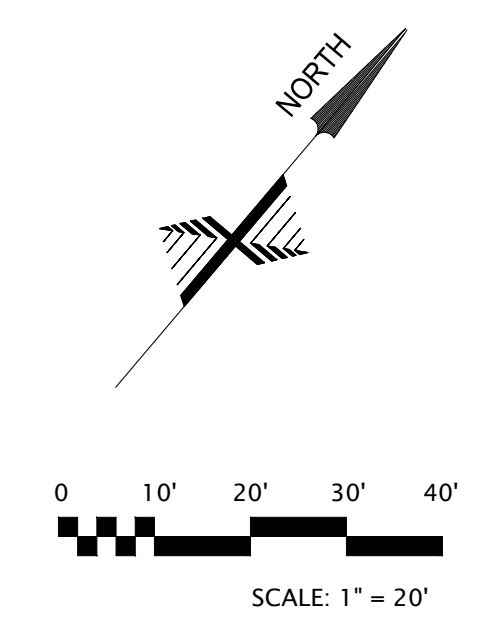
PROJECT NO: 2017-1018

SCALE: AS SHOWN

SHEET NUMBER: C3.1

SHEET TITLE:

PAVEMENT PLAN



DISCLAIMER: TOPOGRAPHIC INFORMATION, INCLUDING PROPERTY LINES, EASEMENTS, EXISTING GRADES, EXISTING UTILITIES LOCATIONS, ETC., SHOWN ARE FOR GENERAL REFERENCE ONLY AND HAVE BEEN PROVIDED BY OTHERS AND HAVE NOT BEEN INDEPENDENTLY VERIFIED BY HOHBACH-LEWIN, INC.

HOHBACH-LEWIN, INC.
 STRUCTURAL & CIVIL ENGINEERS
 200 Sheridan Avenue, Suite 150
 Palo Alto, CA 94306
 (650) 617-5930, Fax (650) 617-5932

